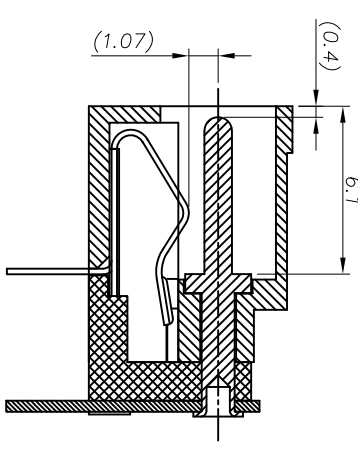
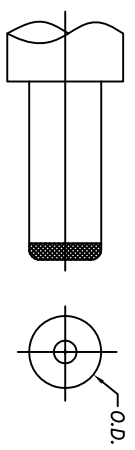
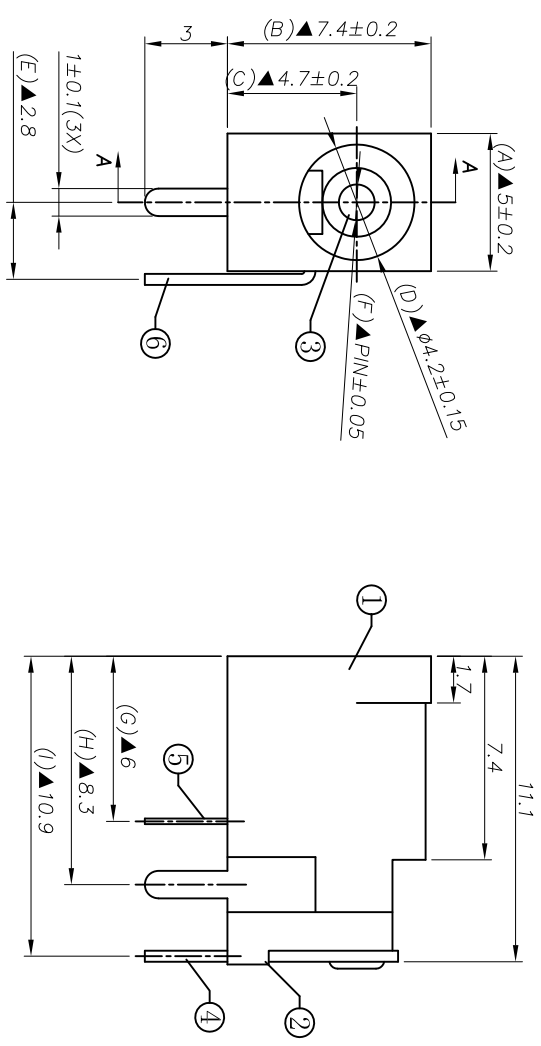
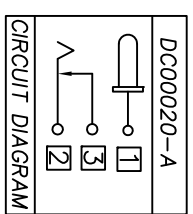


REV. LTR.	DESCRIPTION	SIGN	DATE
	Update drawing	Andy	2011.08.24

Ordering information:
DC000020-A
 (1) (2) (3)
 (1): Series No.
 (2): Schematic option: A
 (3): Center pin diameter:
 A=00.65, C=01.0, E=01.3

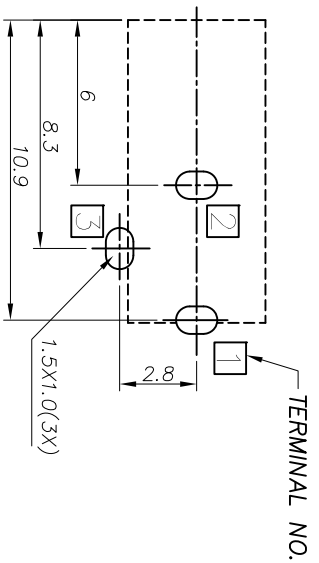


Model No.	DC000020-AA	DC000020-AC	DC000020-AE
PIN	ø0.65	ø1.0	ø1.3
DC PLUG O.D.	ø2.35	ø3.5	ø3.5



: TERMINAL NO.

- Specification:
1. Rating : DC 30V 1A.
 2. Contact resistance: $\leq 50m\Omega$.
 3. After test: $\leq 100m\Omega$.
 4. Insulation resistance: $\geq 100M\Omega$ (500VDC).
 5. After test: $\geq 50M\Omega$.
 6. Withstanding voltage: 500VAC.
 7. Insertion and extraction force: 3N~30N.
 8. Life test: 5000 cycles min.
 9. Operation temperature range: -20°C~70°C.
 10. Preservative temperature range: -40°C~85°C.
 11. Sign "▲" is importance dimension.



RECOMMENDED P. C. B. LAYOUT

UNSPECIFIED TOLERANCE: ± 0.05

(BOTTOM VIEW)

NO.	DESCRIPTION	QTY	MATERIAL	PART NO.	PLATING
⑥	Shunt terminal	1	Brass t0.4	DC000020-03(WP-DC0001)	Silver Plating
⑤	Tip spring	1	Stainless steel t0.2	DC000020-02(TP-DC0001)	Silver Plating
④	Center pin terminal	1	Brass t0.40	DC000020-01(P-DC0001)	Silver Plating
③	Center pin	1	Copper alloy	DC000020-99C/E	Nickel Plating
②	Cover	1	PBT/PA9T	DC000020-S2(GZ-DC0001)	Black
①	Housing	1	PBT/PA9T	DC000020-S1(ST-DC0001)	Black

DESIGNER BY:	Andy	2011.08.25	DC000020-A	PAPER NO: A4	PAGE 1 OF 1	
CHECK BY:	Matt	2011.08.25				TOLERANCE
APPROVED BY:	Ocean	2011.08.25	±0.3	±2°	N/A	6

丞永實業有限公司
 BLUE SOURCES ELECTRONICS CO.,LTD.